

Cloud Adapter **Enterprise** Set Up Guide



Jun 23

1. Obtaining Cloud ID

- 1.1 Option 1: By IP address using web browser
- 1.2 Option 2: By monitor connected via HDMI

2. Setting bespoke network settings (optional)

3. Connecting your security system to your Cloud Adapter Enterprise

1. Obtaining Cloud ID

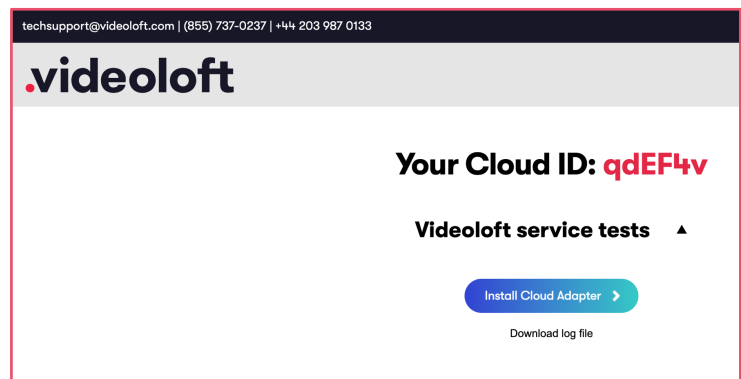
1.1 Option 1: By IP address using web browser

Obtain the IP address of the Cloud Adapter Enterprise from your router or switch. The device name will start with 'cloudadapter'.

cloudadapter12120	A8:A1:59:EE:8E:79	192.168.0.166/24
-------------------	-------------------	------------------

Ensure the machine you are using to access a web browser is on the same network as the Cloud Adapter Enterprise.

Enter the IP address in the browser to reveal a webpage which shows the Cloud ID.



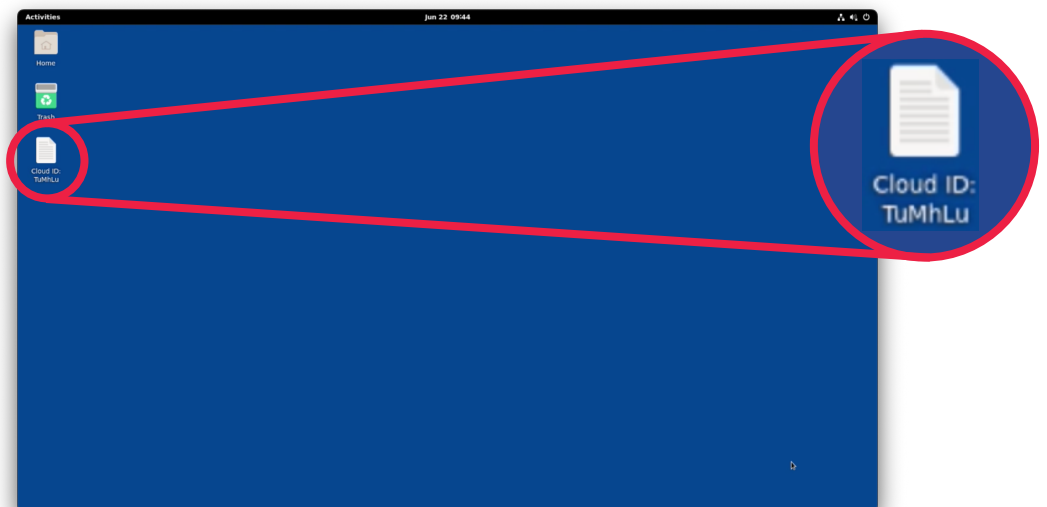
1.2 Option 2: By monitor connected via HDMI

Connect a monitor and keyboard to the Cloud Adapter Enterprise.

You'll be prompted for a default password, enter 'cloud'.

You'll then be prompted to change the password. Please set a secure password and record it in a password manager tool.

Find the text file on the desktop, the Cloud ID will be the file name.

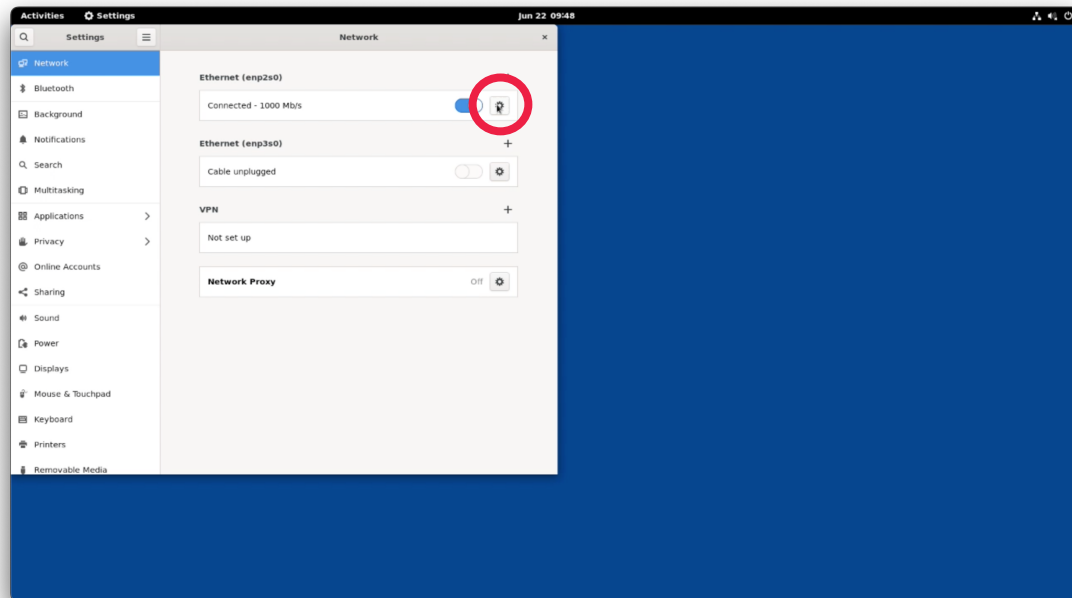


2. Setting bespoke network settings (optional)

Connect a monitor and keyboard to the Cloud Adapter Enterprise.

Go to Activities > Applications > Settings > Network Interfaces.

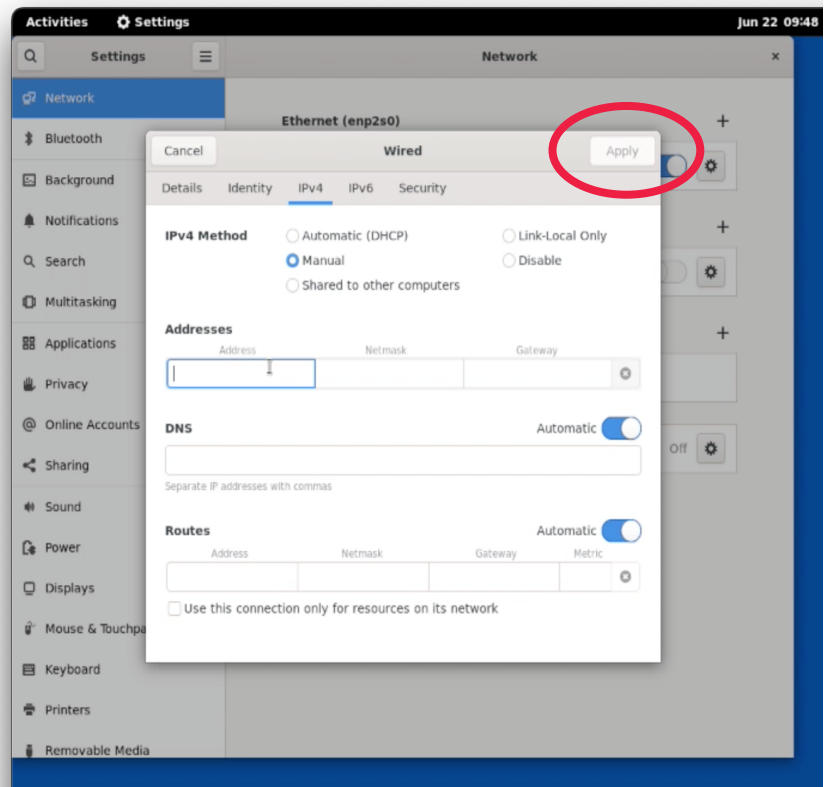
Select the settings cog for the NIC you want to alter.



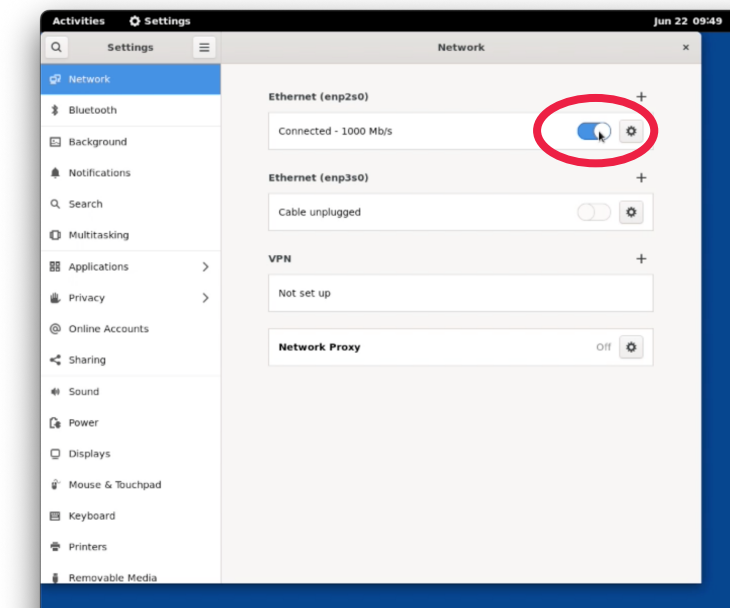
Here you can set the following:

- IPv4 address
- Subnet mask
- Gateway address
- DNS servers

Click 'Apply'.



Once set, un-toggle the NIC and re-toggle to force the changes to be applied.



3. Connecting your security system to your Cloud Adapter Enterprise

Required steps vary depending on the brand of cameras or NVR/DVR you are connecting to Videoloft. Brand specific installation guides can be found [here](#).