

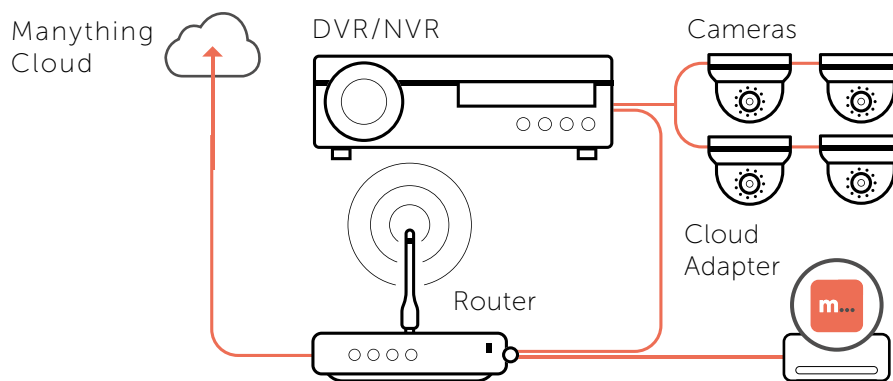
manything...

Installation Guide

Cameras recording to cloud + local DVR/NVR



1. How it works



2. Pre-installation

2.1 What you'll need

- Manything Cloud Adapter
- Smartphone or tablet with the latest Manything app (iOS 10 or above, Android 4.2 or above)

2.2 Compatible DVRs/NVRs

- All Hikvision DVRs/NVRs, including Hikvision OEM. Please contact us if:
 - The recorders have very old firmware, it might need to be updated for our software to work
 - You want to use specific Hikvision OEM brands, we haven't tested them all but will be able to advise further if you tell us the model numbers

2.3 Your account

- Download the Manything app and login with your username and password

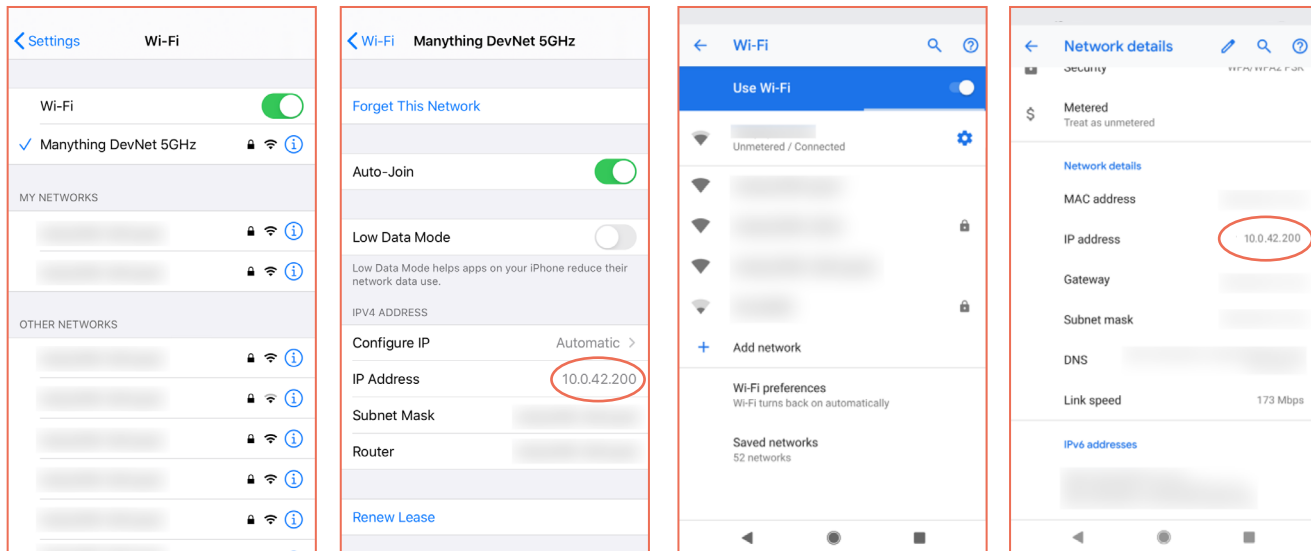
3. Installation

3.1 Network

- Make sure that the smartphone or tablet you are using for the installation is on the same network as the DVR/NVR and Cloud Adapter. Check that you have the latest version of the Manything app and log in with your account credentials.

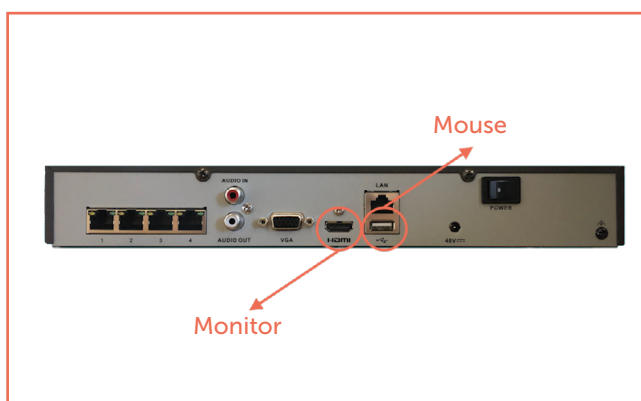
3.2 Finding your phone's IP address

- Head to Settings > Wi-Fi. If you're not already connected to the network, tap it and connect now.
- Tap the network's name to open its options; if you're using Android, you will need to expand the Advanced section.

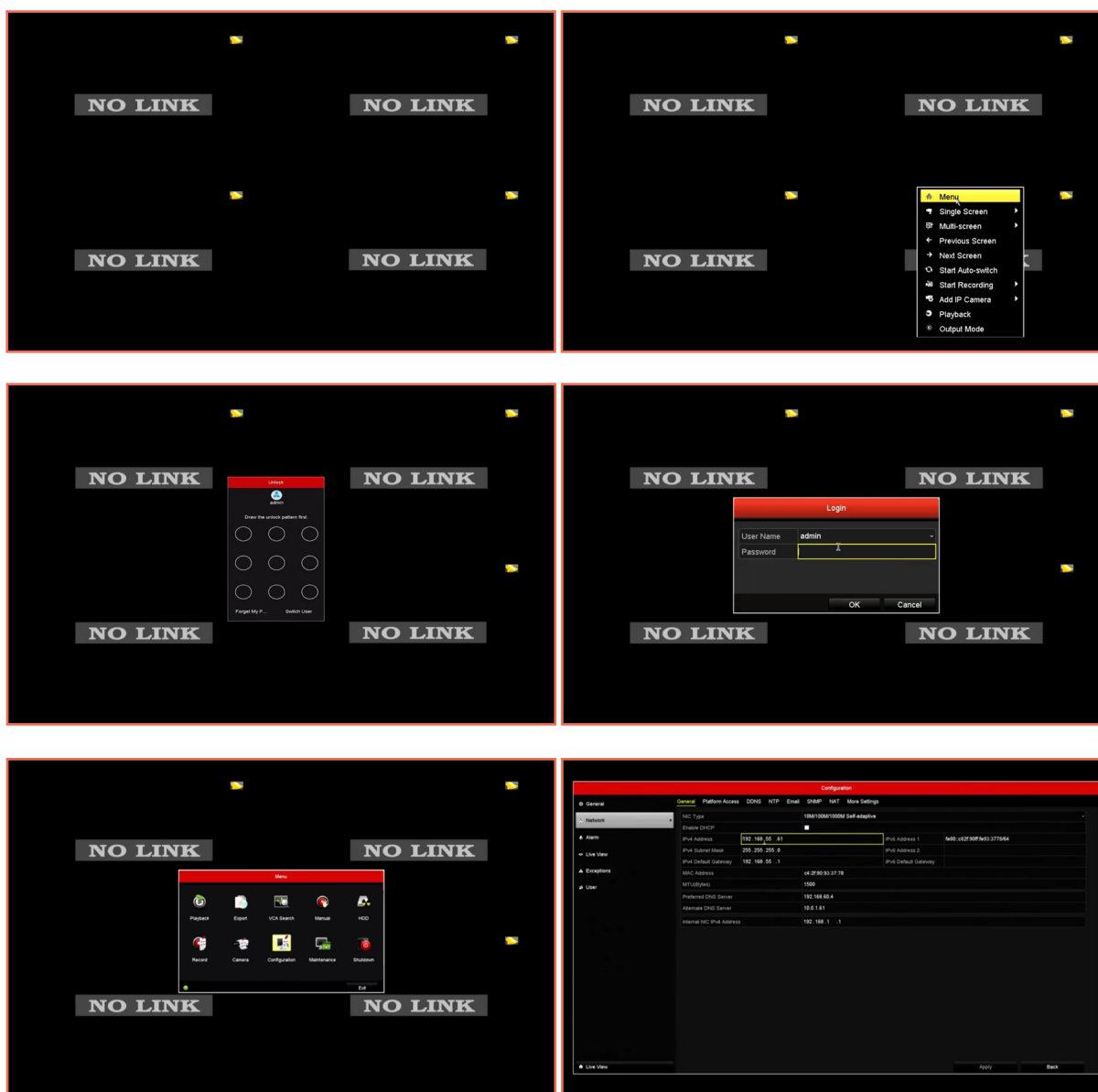


3.3 Finding your recorder's IP address

- You'll need a computer monitor and a mouse to access your recorder's menu.
- Monitor is to be plugged into the HDMI port, mouse is to be plugged into the USB port

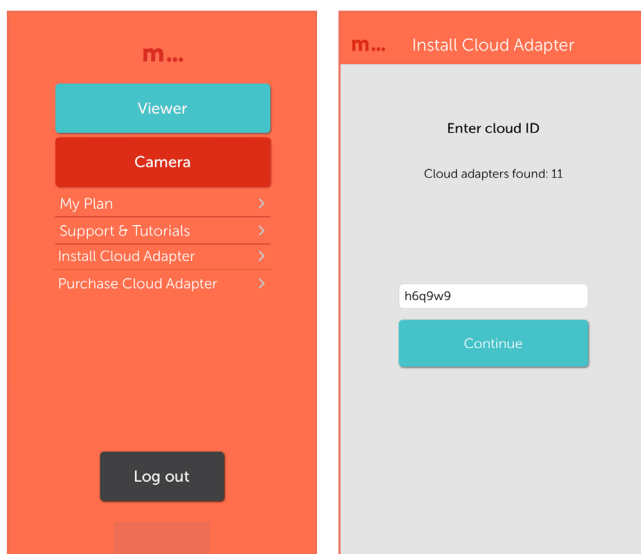


- Turn on the monitor. You will either see your camera feed, or, if you have no cameras set up yet, a screen saying 'No link' or 'No video'
- Right click on the screen and choose Menu from the dropdown list
- You will be asked to draw your security pattern. If you know it enter it now or right click to enter your password
- You will need to enter your recorder admin username and password. If you don't know these details, contact your installer.
- Once you've logged in, from the main menu choose Configuration
- In the left hand side menu choose Network. Your IP address is the number in the 'IPv4 Address' tab



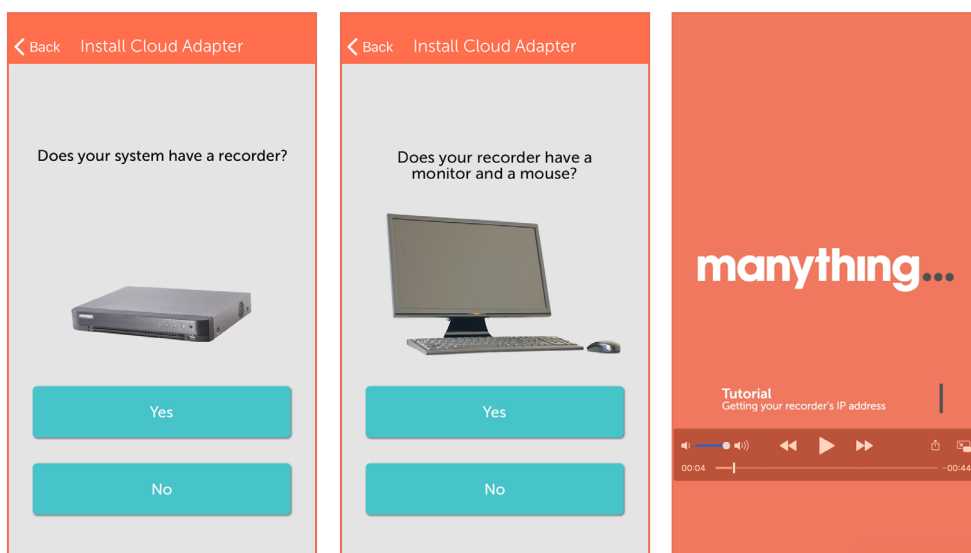
3.4 Setting up Cloud Adapter

- Ensure that the DVR/NVR is connected to power and network, and that the cameras are connected
- Connect the Cloud Adapter to the same network **and then** power
- Tap 'Install Cloud Adapter' on the main menu to begin the installation process, enter the Cloud ID when prompted. This can be found on a sticker on the side of the Cloud Adapter'. Note that the Cloud ID is case sensitive.

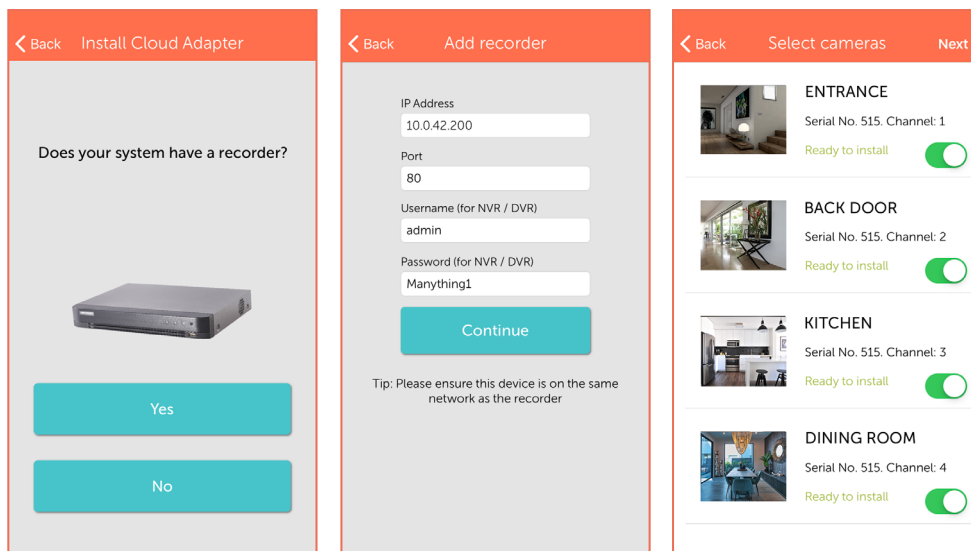


3.3 Connecting to DVR/NVR

- Once you have entered the Cloud ID, you will be asked if your system has a recorder, tap 'Yes'. You will then be asked whether your recorder has a monitor and a mouse, answer accordingly.
- You will then be taken to an appropriate tutorial video explaining how to get your recorder's IP address. If you already know how to do that, skip to the next step.

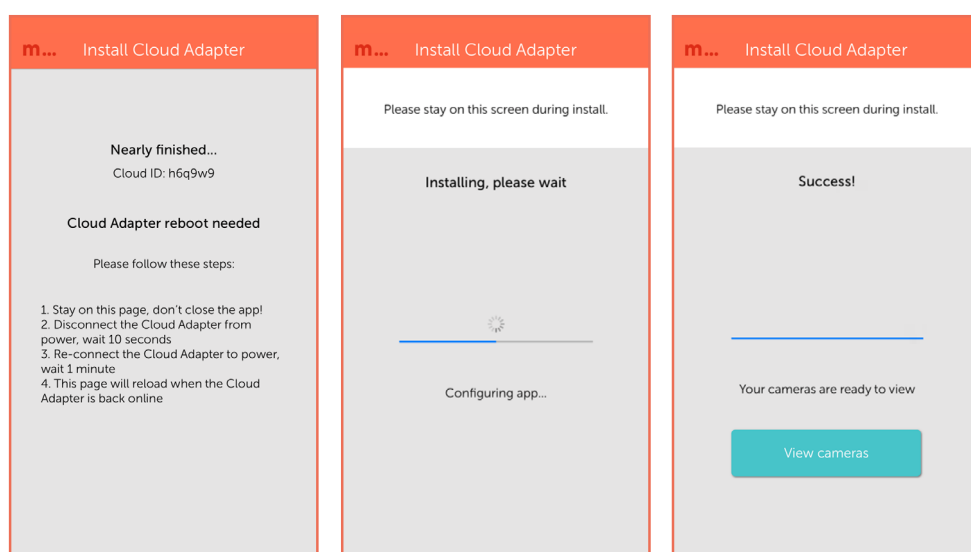


- Next, enter the recorder's IP address, and the DVR/NVR username and password, tap 'Continue'
- Select the required channels, then tap 'Next'. If you are connecting more than 8 channels to the cloud, see Appendix 1.



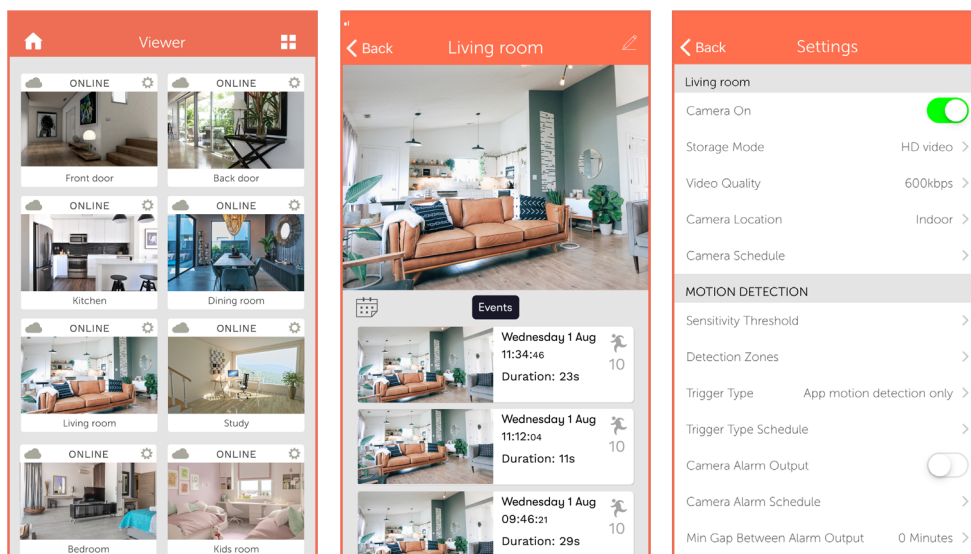
3.6 Completing installation

- When prompted, disconnect Cloud Adapter temporarily from power and then reconnect. Stay on app screen for approx 1 min while the Cloud Adapter reboots.
- Once installation complete, tap 'View cameras'



4. Post-installation

- Once the installation is complete, tap 'View cameras'. For each camera:
 - Check that the live feed is working (allow time for it to connect)
 - Check that motion activated events are being recorded
 - Tap the settings cog and amend any settings as required



Appendix 1

- If you are connecting more than 8 channels to the cloud you'll need to set up multiple Cloud Adapters on your account. We recommend doing them one at a time, following the steps in this guide. Once you have installed the 1st Cloud Adapter, the app will show you which channels are already connected to the cloud to help you choose which ones to select during the installation of the 2nd Cloud Adapter.